

Three Unrecorded Longicorn Beetles from Naka-Iwojima Island (Volcano Islands)

By Keiichi KUSAMA¹⁾ and Shigeo TSUYUKI²⁾

中硫黄島（火山列島）より未記録のカミキリ3種について

草間 慶一・露木 繁雄

(Received Feb. 24, 1977; Accepted Mar. 10, 1977)

The authors had a chance to examine the fauna of Naka-Iwojima Island, the Volcano Islands, from 21st to 28th July 1976. During the period, about 30 species of Coleoptera were collected, including 3 species of Cerambycidae, which were all new records from this Island, especially one of them, *Prosoplus bankii*, was new record from Japan territory.

A list of Cerambycidae collected from the Island was the following:

1. *Ceresium unicolor unicolor* (FABRICIUS)

21-28, July 1976, common, about 50 specimens were collected from living leaves of *Cocos nucifera* L., *Ficus microcarpa* L. etc. and attracted to light. New record from Iwojima Island.

2. *Sybra pascoei* LAMEERE

26 July 1976, 1ex. New record from Ogasawara Islands.

3. *Prosoplus bankii* (FABRICIUS), Pteropliini (Fig. 1)

21-28 July 1976, abundance, more than 80 specimens were collected from dead or half-dead plants, ad. *Melia azedarach* L., *Leucaena glauca* (L.) BENTHAM, *Ricinus communis* L., *Agave americana* L. etc. New record from Japan.

New Japanese name: Murayama-munekobu-sabi-kamikiri

*This is named in honour of CDR Waro MURAYAMA of commander of Iwojima.

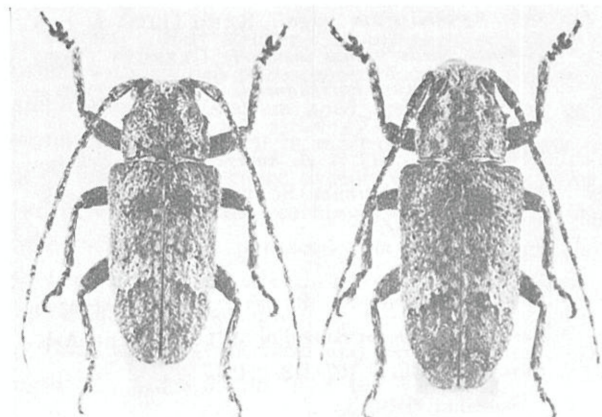


Fig. 1 *Prosoplus bankii* (FABRICIUS)
(Naka-Iwojima Is : Left, ♂; right, ♀)

Acknowledgements

The authors wish to express their sincere gratitude to Commander Waro MURAYAMA of Commanding Officer of Air Facility Iwojima, Lieutenant Colonel Masaki IZUMI of Japan Air Self-Defence Force and Lieutenant Commander Hidekatsu KOSHIO of Maritime Self-Defence Force for their advice and hospitality. The helpful suggestions and assistances of En-Sign. Yoshio CHIBA and the other officers in Iwojima are also gratefully acknowledged.

Present address: 1) Biological Institute, Faculty of Science, Shizuoka University, Shizuoka-city (〒422)
2) 7-1-24, Zushi, Zushi-city, Kanagawa Pref. (〒249)